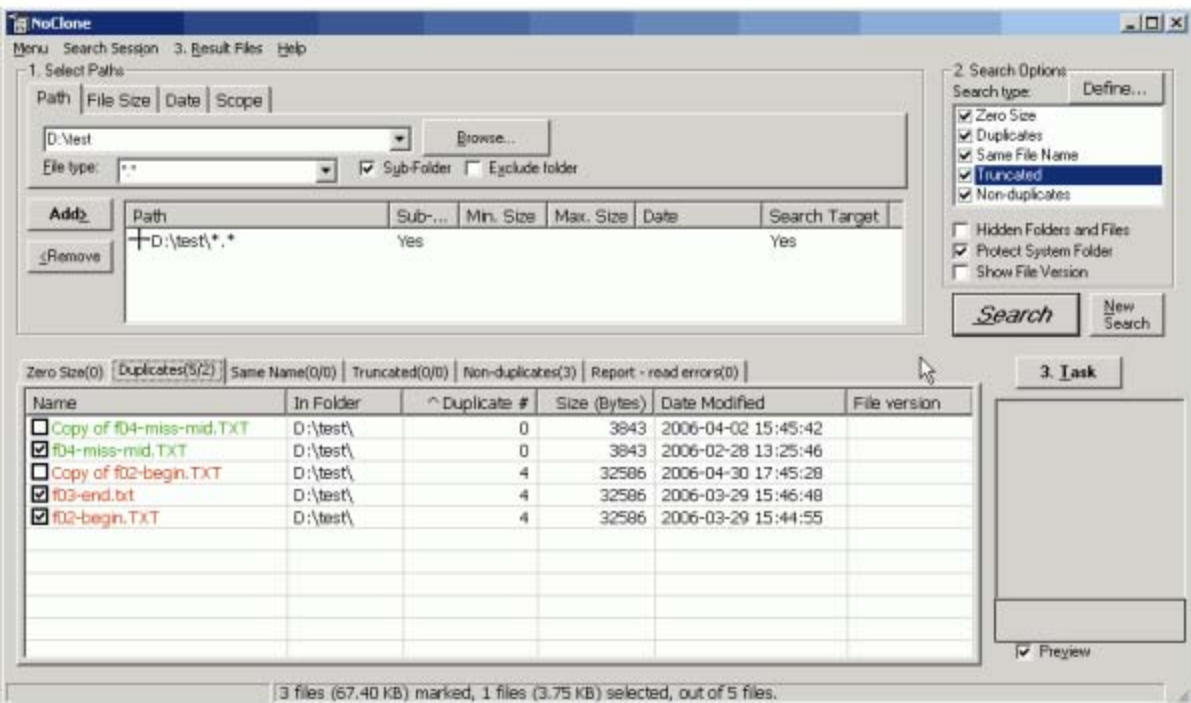


cap-01.tif



cap-02.tif

Microsoft Excel - list.csv

File Edit View Insert Format Tools Data Window Help Adobe PDF

Type a question for help

100%

Security...

Arial - 10

B / U ABC A A

G1

	A	B	C	D	E	F	G	H	I
	Name	In Folder	Duplicate #	Size (Bytes)	Date Modified	File version			
2	Copy of 04-miss-mid.TXT	D:\test\	0	3,843	2006-04-02 15:45				
3	04-miss-mid.TXT	D:\test\	0	3,843	2006-02-28 13:25				
4	Copy of 02-begin.TXT	D:\test\	4	32,586	2006-04-30 17:45				
5	02-begin.TXT	D:\test\	4	32,586	2006-03-29 15:44				
6	03-end.txt	D:\test\	4	32,586	2006-03-29 15:46				
7									
8									
9									
10									
11									
12									
13									

list

Ready

NJM

cap-03.tif

Microsoft Excel - list.csv

File Edit View Insert Format Tools Data Window Help Adobe PDF

Type a question for help

100%

Security...

Arial - 10

B / U ABC A A

G3

=IF(C3=C2,"del","keep")

	A	B	C	D	E	F	G	H	I
	Name	In Folder	Duplicate #	Size (Bytes)	Date Modified	File version			
2	Copy of 04-miss-mid.TXT	D:\test\	0	3,843	2006-04-02 15:45				
3	04-miss-mid.TXT	D:\test\	0	3,843	2006-02-28 13:25		del		
4	Copy of 02-begin.TXT	D:\test\	4	32,586	2006-04-30 17:45		keep		
5	02-begin.TXT	D:\test\	4	32,586	2006-03-29 15:44		del		
6	03-end.txt	D:\test\	4	32,586	2006-03-29 15:46		del		
7									
8									
9									
10									
11									
12									
13									

list

Ready

NJM

cap-04.tif

Microsoft Excel - list.csv

hash function

File Edit View Insert Format Tools Data Window Help Adobe PDF

100% Security...

Arial 10 B I U ABC A A

H2 =LEN(A2)+LEN(B2)

	A	B	C	D	E	F	G	H	I
	Name	In Folder	Duplicate #	Size (Bytes)	Date Modified	File version			
2	Copy of 04-miss-mid.TXT	D:\test\	0	3,843	2006-04-02 15:45			32	
3	04-miss-mid.TXT	D:\test\	0	3,843	2006-02-28 13:25	del		24	
4	Copy of 02-begin.TXT	D:\test\	4	32,586	2006-04-30 17:45	keep		29	
5	02-begin.TXT	D:\test\	4	32,586	2006-03-29 15:44	del		21	
6	03-end.txt	D:\test\	4	32,586	2006-03-29 15:46	del		19	
7								32	
8									
9									
10									
11									
12									
13									

list

Ready

cap-05.tif

Microsoft Excel - list.csv

hash function

File Edit View Insert Format Tools Data Window Help Adobe PDF

100% Security...

Arial 10 B I U ABC A A

IF =max(H2:H6)

	A	B	C	D	E	F	G	H	I
	Name	In Folder	Duplicate #	Size (Bytes)	Date Modified	File version			
2	Copy of 04-miss-mid.TXT	D:\test\	0	3,843	2006-04-02 15:45			32	
3	04-miss-mid.TXT	D:\test\	0	3,843	2006-02-28 13:25	del		24	
4	Copy of 02-begin.TXT	D:\test\	4	32,586	2006-04-30 17:45	keep		29	
5	02-begin.TXT	D:\test\	4	32,586	2006-03-29 15:44	del		21	
6	03-end.txt	D:\test\	4	32,586	2006-03-29 15:46	del		19	
7								=max(H2:H6)	
8									
9									
10									
11									
12									
13									

list

Edit

cap-06.tif

Microsoft Excel - list.csv

File Edit View Insert Format Tools Data Window Help Adobe PDF hash function

Arial 10 B I U ABC A A % , 100%

H2 D:\test\

	A	B	C	D	E	F	G	H	I	J
	Name	In Folder	Duplicate #	Size (Bytes)	Date Modified	File version		Prefix		
2	Copy of f04-miss-mid.TXT	D:\test\	0	3,843	2006-04-02 15:45			D:\test\		
3	f04-miss-mid.TXT	D:\test\	0	3,843	2006-02-28 13:25		del	D:\test\		
4	Copy of f02-begin.TXT	D:\test\	4	32,586	2006-04-30 17:45		keep	D:\test\		
5	f02-begin.TXT	D:\test\	4	32,586	2006-03-29 15:44		del	D:\test\		
6	f03-end.txt	D:\test\	4	32,586	2006-03-29 15:46		del	D:\test\		
7										
8										
9										
10										
11										
12										
13										
14										

Select destination and press ENTER or choose Paste

NUM

cap-07.tif

Find and Replace

Find Replace

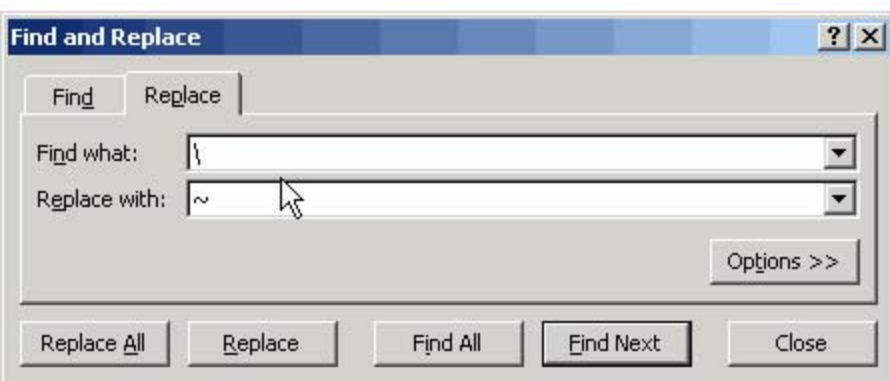
Find what: D:\

Replace with: |

Options >>

Replace All Replace Find All Find Next Close

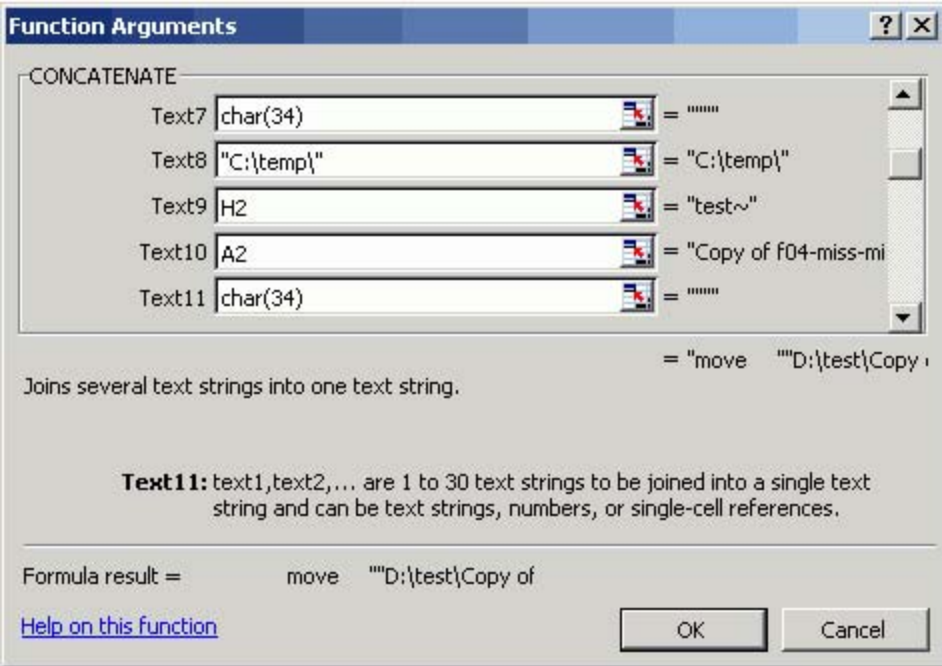
cap-08.tif



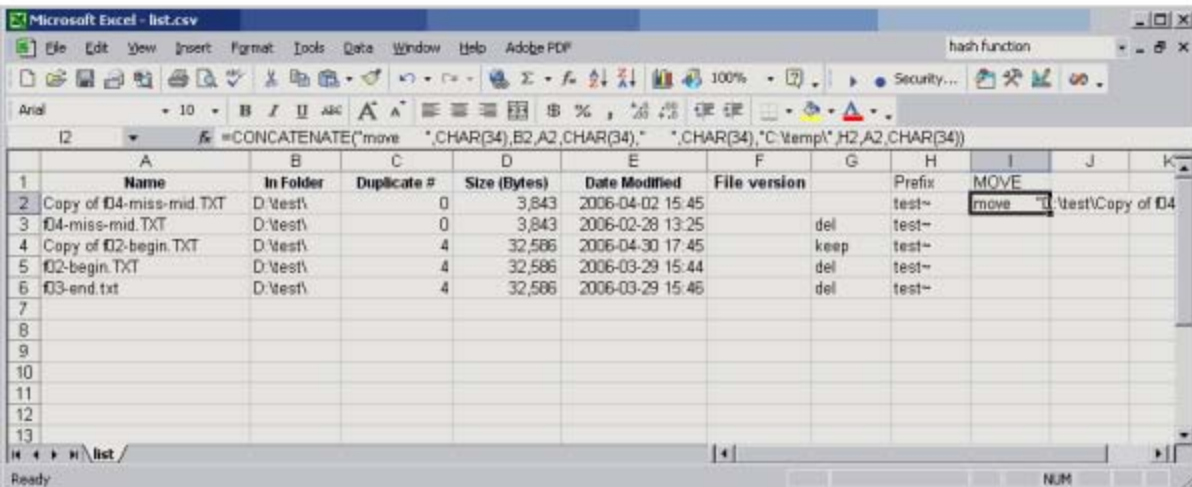
cap-09.tif

	A	B	C	D	E	F	G	H	I	J
1	Name	In Folder	Duplicate #	Size (Bytes)	Date Modified	File version		Prefix		
2	Copy of f04-miss-mid.TXT	D:\test\	0	3,843	2006-04-02 15:45			test-		
3	f04-miss-mid.TXT	D:\test\	0	3,843	2006-02-28 13:25		del	test-		
4	Copy of f02-begin.TXT	D:\test\	4	32,586	2006-04-30 17:45		keep	test-		
5	f02-begin.TXT	D:\test\	4	32,586	2006-03-29 15:44		del	test-		
6	f03-end.txt	D:\test\	4	32,586	2006-03-29 15:46		del	test-		
7										
8										
9										
10										
11										
12										
13										

cap-10.tif



cap-11.tif



cap-12.tif

Microsoft Excel - list.csv

File Edit View Insert Format Tools Data Window Help Adobe PDF hash function

Arial 10 B I U ABC A A % ,

	F	G	H	I	J	K
1	File version		Prefix	MOVE		
2		test~	move	"D:\test\Copy of 04-miss-mid.TXT" "C:\temp\test~Copy of 04-miss-mid.TXT"		
3		del	test~	move "D:\test\04-miss-mid.TXT" "C:\temp\test~04-miss-mid.TXT"		
4		keep	test~	move "D:\test\Copy of 02-begin.TXT" "C:\temp\test~Copy of 02-begin.TXT"		
5		del	test~	move "D:\test\02-begin.TXT" "C:\temp\test~02-begin.TXT"		
6		del	test~	move "D:\test\03-end.txt" "C:\temp\test~03-end.txt"		
7						
8						
9						
10						
11						
12						
13						

Ready NUM

cap-13.tif

Microsoft Excel - list.csv

File Edit View Insert Format Tools Data Window Help Adobe PDF hash function

Arial 10 B I U ABC A A % ,

G3 =IF(C3=C2,CONCATENATE("move ",CHAR(34),B3,A3,CHAR(34)," ",CHAR(34),"C:\temp\",H3,A3,CHAR(34)),")

	A	B	C	D	E	F	G	H
1	Name	In Folder	Duplicate #	Size (Bytes)	Date Modified	File version		Prefix
2	Copy of 04-miss-mid.TXT	D:\test\	0	3,843	2006-04-02 15:45			test~
3	04-miss-mid.TXT	D:\test\	0	3,843	2006-02-28 13:25	move "D:\test\04-miss-mid.TXT"		test~
4	Copy of 02-begin.TXT	D:\test\	4	32,586	2006-04-30 17:45			test~
5	02-begin.TXT	D:\test\	4	32,586	2006-03-29 15:44	move "D:\test\02-begin.TXT" "C:\temp\test~		
6	03-end.txt	D:\test\	4	32,586	2006-03-29 15:46	move "D:\test\03-end.txt" "C:\temp\test~		
7								
8								
9								
10								
11								
12								
13								

Ready NUM

cap-14.tif